

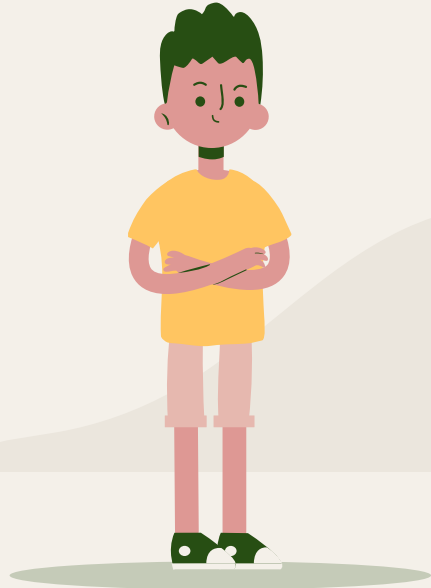
#wearenebinger
@nebingerpta
www.nebingerpta.org

Nebinger
PTA[®]
everychild.one voice.[®]



General Membership Meeting

October 19th, 2022



?

Poll Everywhere

As we are going through our presentation, submit your reactions and questions:

PollEv.com/alynturner439

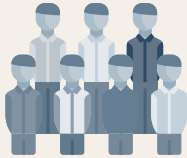
To become a PTA member, text
member22 to (202) 858-1233



Goals, Activities & Celebrations

To become a PTA member, text
member22 to (202) 858-1233

Nebinger PTA 2022-23 Goals



Volunteer Core

Develop a bigger and more diverse core of parent volunteers to support school and PTA programming and events, with meaningful and accessible volunteer opportunities



Fundraising

Build and implement an equitable, efficient, and transparent fundraising approach that strategically meets needs of the Nebinger school community



Middle School

Raise awareness and strengthen Nebinger's incredible middle school to improve retention rates in 5th grade and ensure curriculum meets needs of all kids



PTA Membership

Grow and diversify membership and leadership so that decisions represent diverse interests of our school community.

To become a PTA member, text *member22* to (202) 858-1233

Key PTA Activities

Largely based on priorities set in Spring/Summer, through fundraising, grantwriting, and coordination with school admin, the PTA exists to:



Fund student programs & events

Drama Club, Science Olympiads, Open House, Fall Festival, Field Day, and more!



Host community-building events

Movie/game nights, parent meetups, garden cleanups, teacher appreciation



Give input

Serve as a vehicle for families and neighbors to provide input on, contribute to, and advocate for the school

Celebrations!



EgoPo & Drama Club (Winnie the Pooh!)

Open House

Fall Festival

Garden cleanups

Membership drive (window clings! Nearly 60 members!)

Uniform swap

Operation Warm

Movie/game night

Teacher appreciation (bagels + coffee)

Two kinder meetups

Field trip buses (1 bus for every class)

Re-open library



A little Context...

To become a PTA member, text
member22 to (202) 858-1233

Who is Nebinger? (We are!)

82

Faculty & Staff

~450 Students

Larger than 60% of the District's K-8 schools (~100 total)

~50%

in catchment

About half of the student body is out-of-catchment

20% IEPs

Robust Special Ed program

17% ESL

We have a culturally diverse school!

1 of 2 PTAs

There are only 2 registered PTAs in PhilaSD



School Leadership Teams

Nebinger is supported by several leadership teams:

1

Administrative team

Principal, VP, etc

2

School Events Committee

Made up of teachers & admin

3

Student Council

Elections held in early October

4

SAC

School Advisory Council

5

PTA Board

PTA members

How does the PTA fit in?

We serve as a vehicle for building community among families, teachers, and neighbors
We bring resources to the school to enrich educational and social experiences of the school community



FON

Friends of Nebinger is a volunteer-led neighborhood group that works to benefit Nebinger Elementary, through activities like running the library & hosting garden cleanups.

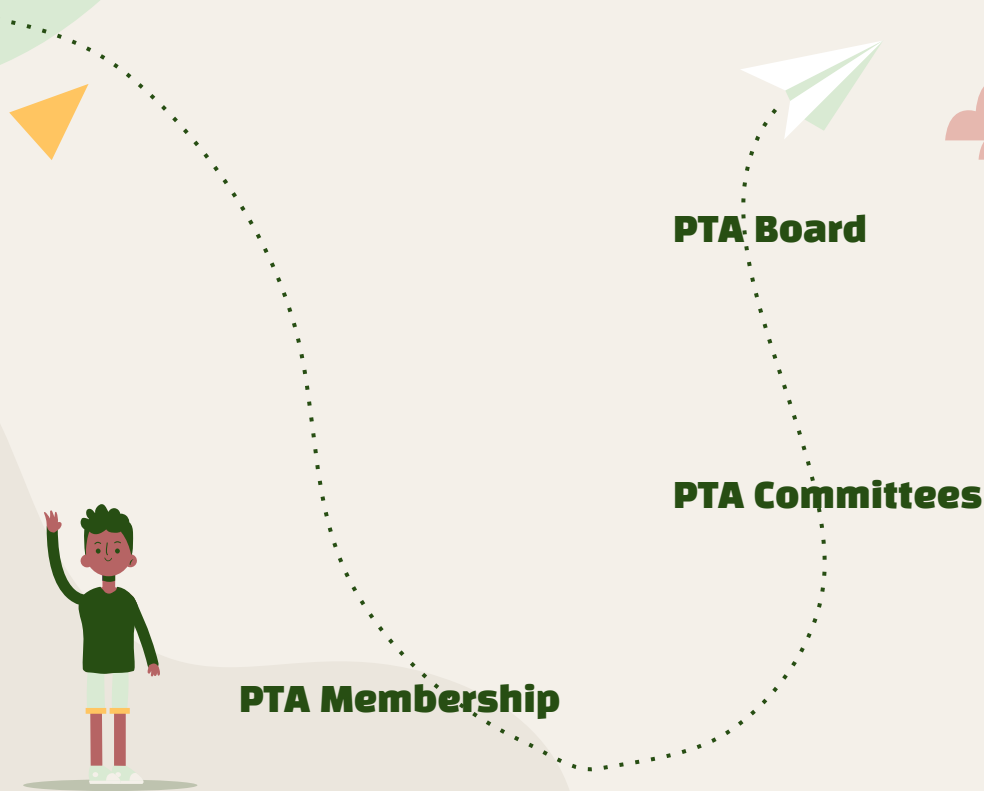




How is the PTA Structured?

To become a PTA member, text
member22 to (202) 858-1233

To become a PTA member, text
member22 to (202) 858-1233



How much time do you have?

Can you attend
meetings? Run events?
Help out occasionally?

Role of the PTA Board, Committees & Members

What does the PTA board do?

- Non-profit administration and budget management
- Social media & communication
- Collaborate and coordinate with school administration, etc
- Coordinate PTA committees
- Generate membership base and manage state, national dues

To become a PTA member, text
member22 to (202) 858-1233

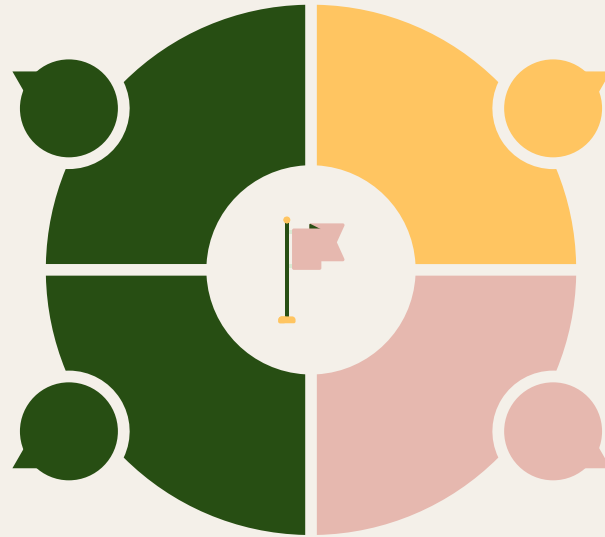
What can I do as a member?

View

Read Newsletter
Attend Events
Peruse social media

Voice

Participate in meetings
Email board members



Vote

Vote at meetings for
priorities/activities

Volunteer

Join committees
Volunteer for specific
roles/events
Become a board member

To become a PTA member, text
member22 to (202) 858-1233

What are the PTA Committees?

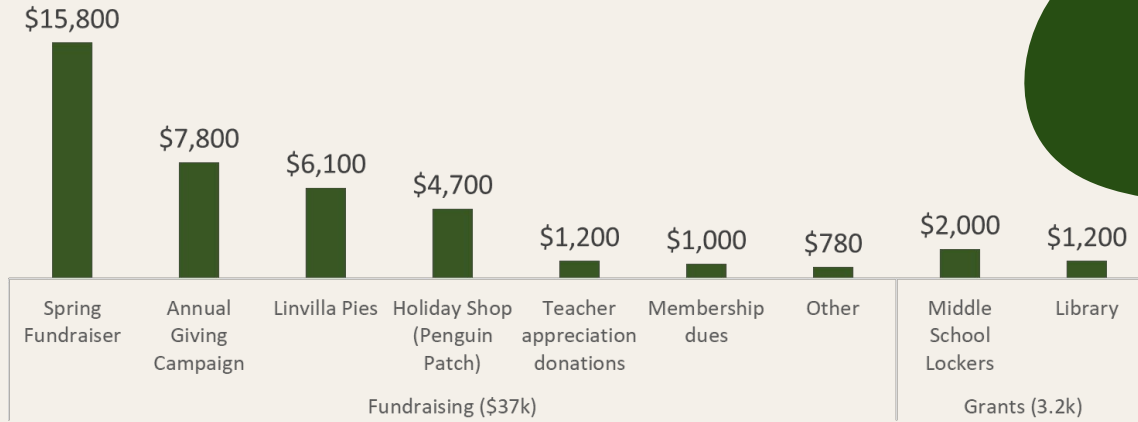
Committee	Purpose	Point Person
Grants and Donor Campaigns	Identify funding opportunities through grants, etc and develop and execute annual donor campaign	Alyn Turner president@nebingerpta.org
Events and Volunteers	Collaborate with school to host events and create meaningful volunteer experiences for members	Carrie Maria vp@nebingerpta.org
Teacher/Staff Appreciation	Develop and execute teacher appreciation activities and events, within PTA budget and/or teacher appreciation fund campaigns	Kristin Rodger vp_elementary@nebingerpta.org
Spring Fundraiser	Develop and execute spring fundraising event, leveraging partnerships and resources within the Nebinger school community to raise \$\$ for school investments	Nicole De Jessa vp_middle@nebingerpta.org
Membership and Outreach	Grow and diversify our membership and leadership so that decisions represent the diverse interests of our school community	Silvia Licciulli secretary@nebingerpta.org

Budget

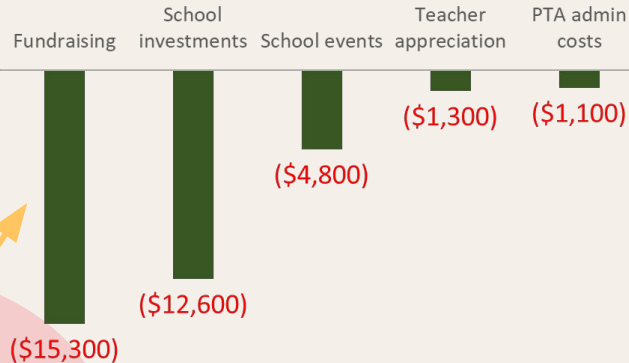
Take it away, Tom!

To become a PTA member, text
member22 to (202) 858-1233

What were our sources of funding last year?



What was funding spent on?



Side note: Our goal is to reduce spending on fundraising, so we can have more of these funds going to the school

To become a PTA member, text **member22** to (202) 858-1233

Annual Audit

The report will be read by a member of the auditing committee or the secretary. The presiding officer will then call for the appropriate action.

Local PTA Name Nebinger PTA Date July 1, 2022

Council _____ Region 12

Balance on Hand (date of last audit)..... \$ 35,943.01

Receipts (from last audit to date of audit) \$ 40,496.89

Total Cash\$ --

Disbursements (from last audit to date of audit)\$ 35,098.16

Balance on Hand (date of audit).....\$ 41,341.74 *

Latest Bank Statement Balance.....\$ 41,233.24

Checks Outstanding:
(List check numbers)(Amounts)

N/A	
N/A	
N/A	

Total Checks Outstanding.....\$ (0.00)

Balance in Checking Account.....\$ 41,341.74 *

*These numbers should agree.

Date of Audit July 1, 2022

We have examined the books of the Nebinger PTA and find them to be (please choose one of the following to complete the sentence)
 correct. incomplete. substantially correct with the following adjustments:

Balance in Checking Account includes amounts in all accounts: PNC \$41,233.24 + Venmo \$108.50 = \$41,341.74 Total

incorrect.

Date audit completed August 31, 2022

Auditors' signatures Patricia Slutsky
Carrie Maria Digitally signed by Carrie Maria
Date: 2022.08.31 14:04:00 -0400
Alyn Turner Digitally signed by Alyn Turner
Date: 2022.08.31 14:04:00 -0400

(The report should be read by a member of the auditing committee or the secretary. The presiding officer should then call for the appropriate action.)

To become a PTA member, text
member22 to (202) 858-1233

Budget 2022-23

Funds available at beginning of financial year (07/01/2022)			\$41,341.74
	Budgeted Income	Budgeted Expenses	Budget Net
Fundraising	\$39,765.00	(\$9,281.00)	\$30,484.00
Student Events & Learning	-	(\$18,000.00)	(\$18,000.00)
School/Teacher/Staff Support	\$1,000.00	(\$4,100.00)	(\$3,100.00)
Community Events & Community Support	-	(\$4,000.00)	(\$4,000.00)
PTA Admin & Marketing	\$100.00	(\$2,880.07)	(\$2,780.07)
Totals	\$40,865.00	(\$38,261.07)	\$2,603.93
Projected bank balance if on budget			\$43,945.67

Student events and learning:

- Drama Club
- Field Trips
- Field Day
- Science Olympiad
- Robotics
- Sea Perch
- Library
- 8th Grade Graduation

School support:

- Teacher Appreciation
- Theater Curtains
- Beautification & Grounds Keeping

Community events:

- Welcome Back Open House
- Fall Fest
- Movie/game nights

To become a PTA member, text *member22* to (202) 858-1233

Fundraising Goals & Progress

Fundraising Activity	Goal	Progress
Spring Fundraiser	\$20,000 <i>(Net \$13,500)</i>	–
Annual Giving Campaign	\$15,000	\$150
Linvilla Pie Sales	\$4,265 <i>(Net \$1,484)</i>	–
Amazon Smile (smile.amazon.com)	\$500	\$17

Ways you can help us meet our goals:

Join a Committee and/or volunteer to help out!

Participate in fundraising events (e.g., spring fundraiser, pie sale, donor campaign) by spreading the word with your networks/employers/families!

Sign up and use Amazon Smile! PTA earns 0.5% for all eligible purchases on things you're already planning to buy! Use EIN: 83-2888238

To become a PTA member, text member22 to (202) 858-1233

What's Next?

Stick around and connect with Board members to indicate interest in committee work

To become a PTA member, text *member22* to (202) 858-1233

Upcoming PTA and School Events



To become a PTA member, text
member22 to (202) 858-1233

Upcoming Volunteer Opportunities



nebingerpta.org

[@nebingerPTA](https://www.instagram.com/nebingerPTA)



Yearbook Ads

Linvilla Pie Sale

Scholastic Book Fair

Holiday Shop

Garden Cleanup

Language Translation

To become a PTA member, text
member22 to (202) 858-1233